

SEE VIDEOS:

- 1. Enbio Sterilizer Presentation
- 2. Installation Pro & S Models
- 3. Enbio Pitstop Precision Service

enbio

Unwrapped
FAST / 134°C

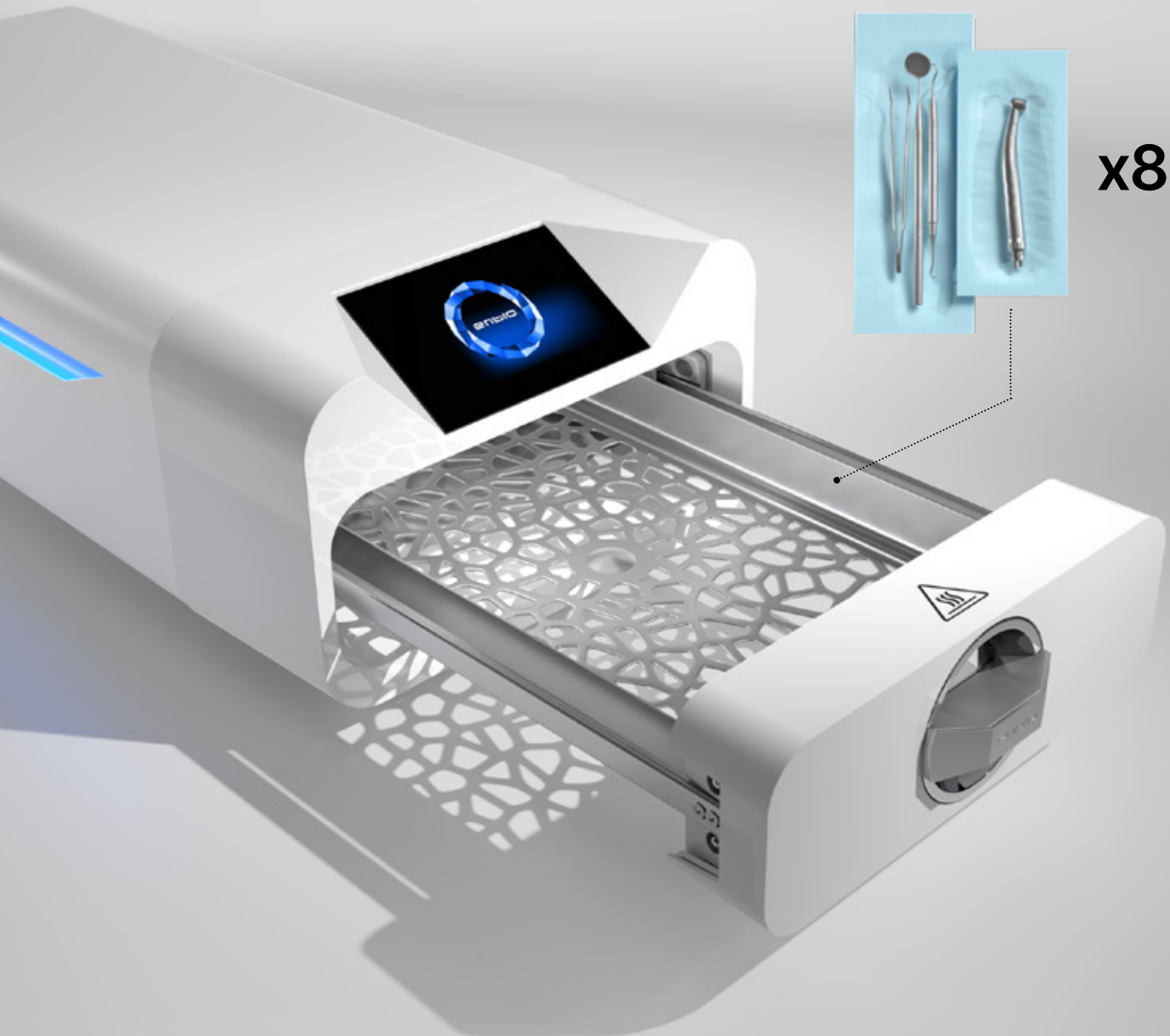
7 min

Wrapped
Class B / 134°C

15 min

Wrapped
Class B / 121°C

30 min

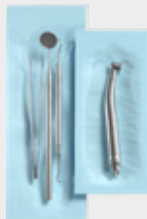


**Enbio^S Autoclave
Technical Data**

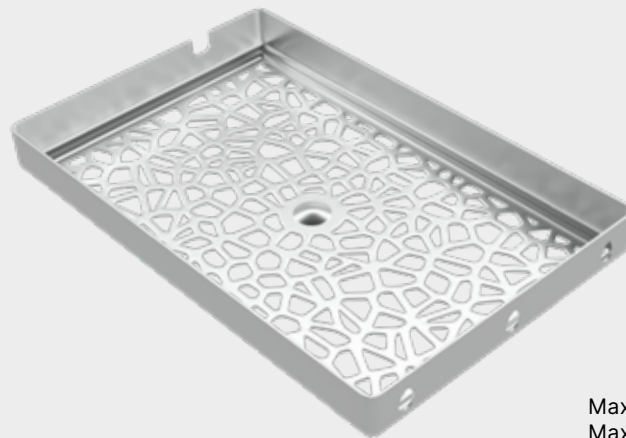


Class B
Vacuum
Pouches+
drying

Capacity



x8



SEE VIDEOS:

1. Enbio Sterilizer Presentation
2. Installation Pro & S Models
3. Enbio Pitstop Precision Service



Load space
28×18×3,5 cm

Max. packages amount (circa)	8
Max. recommended batch weight	0,5 kg
Process chamber volume	2,7 l



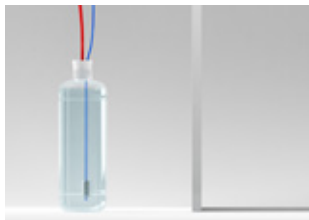
Power supply

Enbio PRO works with any typical electrical outlet.



Data archiving

All process data are automatically written to a USB disk.



Water supply

Enbio uses distilled water from external tank. With Enbio Magic Filter, water can be recycled.



Process reports

Enbio Data Viewer (included) allows generating and printing detailed process reports from the data on USB.

Dimensions



Pressure & temperature

Working pressure	2,1 Bar
Max. pressure	2,3 Bar
Max. process temperature	137°C

Electrical

Power supply	230V/50Hz
Installed power	2250 W
Max. power consumption	15 A

Misc

Ingress protection	IP20
Data archiving	USB
Water conductivity*	< 15 µS/cm

* - demineralized water only

SEE VIDEOS:

- 1. Enbio Sterilizer Presentation
- 2. Installation Pro & S Models
- 3. Enbio Pitstop Precision Service

enbio

Unwrapped
FAST / 134°C

9 min

Wrapped
Class B / 134°C

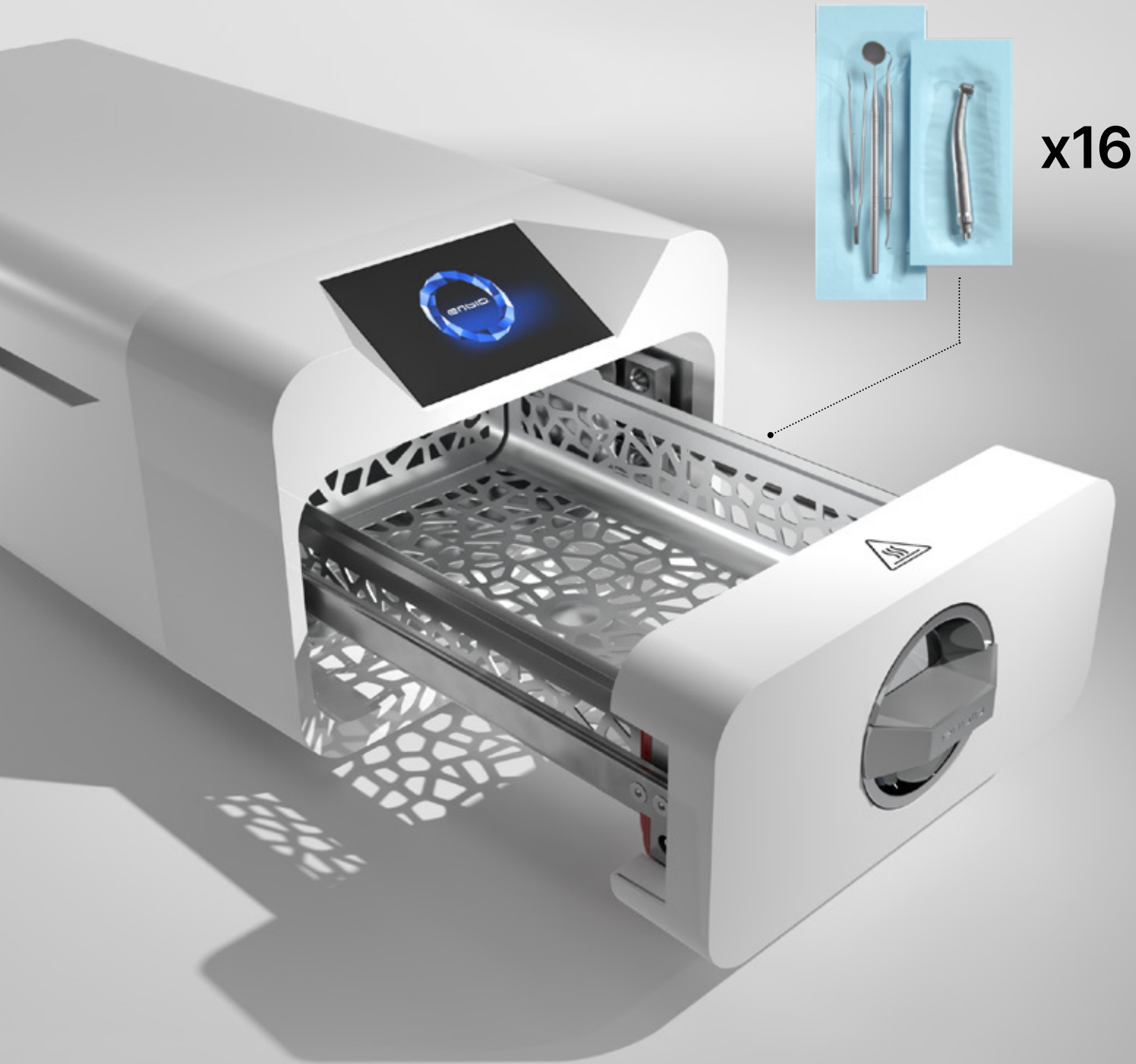
18 min

Wrapped
Class B / 121°C

30 min

Wrapped / PRION
Class B / 134°C

43 min

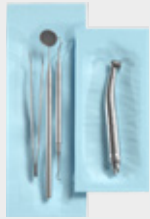


**Enbio PRO Autoclave
Technical Data**



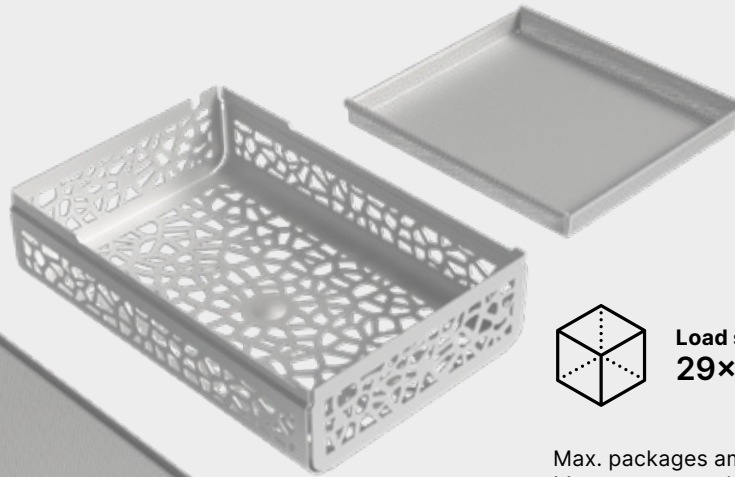
Class B
Vacuum
Pouches+
drying

Capacity



x16

Bottom tray



Top tray
(for small instruments)
20×18×2 cm



Load space
29×19×8 cm

Max. packages amount (circa)	16
Max. recommended batch weight	1,0 kg
Process chamber volume	5,3 l



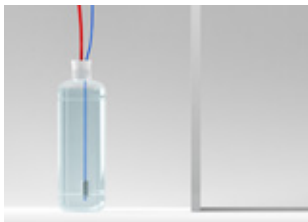
Power supply

Enbio PRO works with any typical electrical outlet.



Data archiving

All process data are automatically written to a USB disk.



Water supply

Enbio uses distilled water from external tank. With Enbio Magic Filter, water can be recycled.



Process reports

Enbio Data Viewer (included) allows generating and printing detailed process reports from the data on USB.

Dimensions

56 cm



27 cm



20 cm

Pressure & temperature

Working pressure	2,1 Bar
Max. pressure	2,3 Bar
Max. process temperature	137°C

Electrical

Power supply	230V/50Hz
Installed power	3250 W
Max. power consumption	15 A

Misc

Ingress protection	IP20
Data archiving	USB
Water conductivity*	< 15 µS/cm

* - demineralized water only



Marketed by:
Majac Medical Products Pty. Ltd.
Tel: 1300 138 578 • Int: +61 7 3265 6355
Email: sales@majacmedical.com.au
www.majacmedical.com.au



FS 540017