

Directions for use

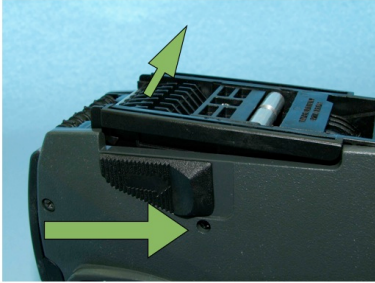
REF: 602.002.0001

Sterintech™ 2 - line Label gun (top loading)
with 3 x ABC...Z and 11 numbers in first line
and 14 x numbers in the second line

Content:

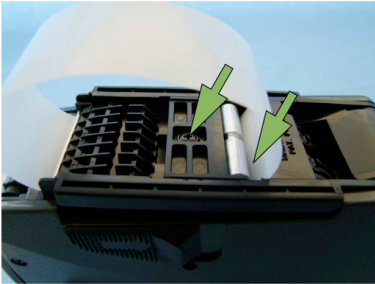
- 1) Loading labels
- 2) Changing ink roller
- 3) Setting the print
- 4) Print location adjustment
- 5) Exploded view and part numbers
- 6) Lay-out of the 2 lines digits

1) Loading labels

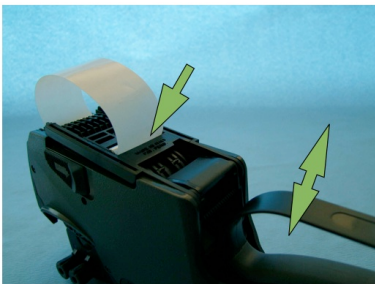


To be able to load labels into the label gun one should open the bottom of the label gun by pushing both levers at the side backwards. The bottom of the label gun will open itself after which one can push the bottom backwards to have a full access to place the label roll into the gun. Also the top of the label gun should be opened by lifting it .

Unroll the label roll partly and remove 8 labels. Place the label roll into the top part and guide the labels towards the open bottom. Close the top part and close the bottom (label material without the labels should stick out sufficiently (6 - 7 cm)



After closing the bottom of the label gun one takes the backing of the label rolls and fold it backwards into the slot as per picture just behind the metal rolls. By operating the label gun handle a few times the backing material will be pulled in into the label gun. The label gun will align itself into the proper printing position.

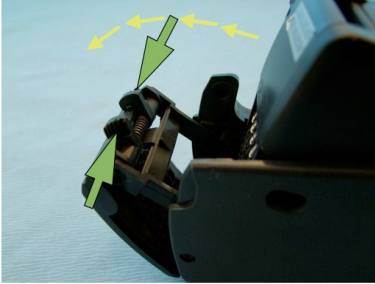


In case of a rarely misprint one can adjust the printing position manually by loosen this screw and adjust the slide a bit to the back or front. After adjusting one should tight the screw again. The screw can be reached through the backing material.



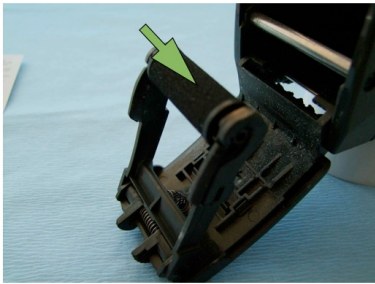
Now the labels are placed the machine can be operated and labels will be printed and dispensed by the Sterintech 2-line label gun.

After a while the printing will become more grey and a change of the ink roller may be necessary.



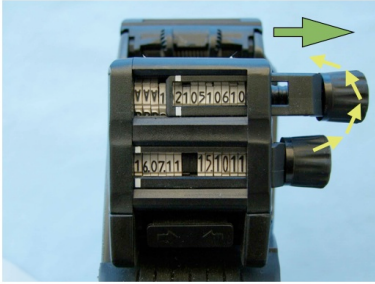
2) Changing ink roller

Changing the ink roller is simple. One squeeze the two levers at the front of the label gun and pull the little door to the front. Automatically the door will pull out the ink roller.



The ink roller is now easily accessible and can be easily replaced by a new one. Please always use genuine parts in order to prevent clogging of the characters and misprints or smearing as a result.

Never re-ink an old ink roller. It will lead to cleaning the machine and replacing parts eventually.



3) Setting the print

Move the turning knob to the required position and turn it until the required character is in position. To function properly the white area of the printing positions should be visible .



The first three characters of the top line are selected following the table at the front of the printing head label. An example: If you want to print A then select N in the dialer area. To print Q you need to select D in the dialer area. For other characters please follow table below:

A	B	C	D	E	F	G	H	I	J	K	L	M
N	O	P	Q	R	S	T	U	V	W	X	Y	Z

After setting all the characters in the right position for both lines one needs to secure the turning knob in its original position again. In this way the printing is secured.

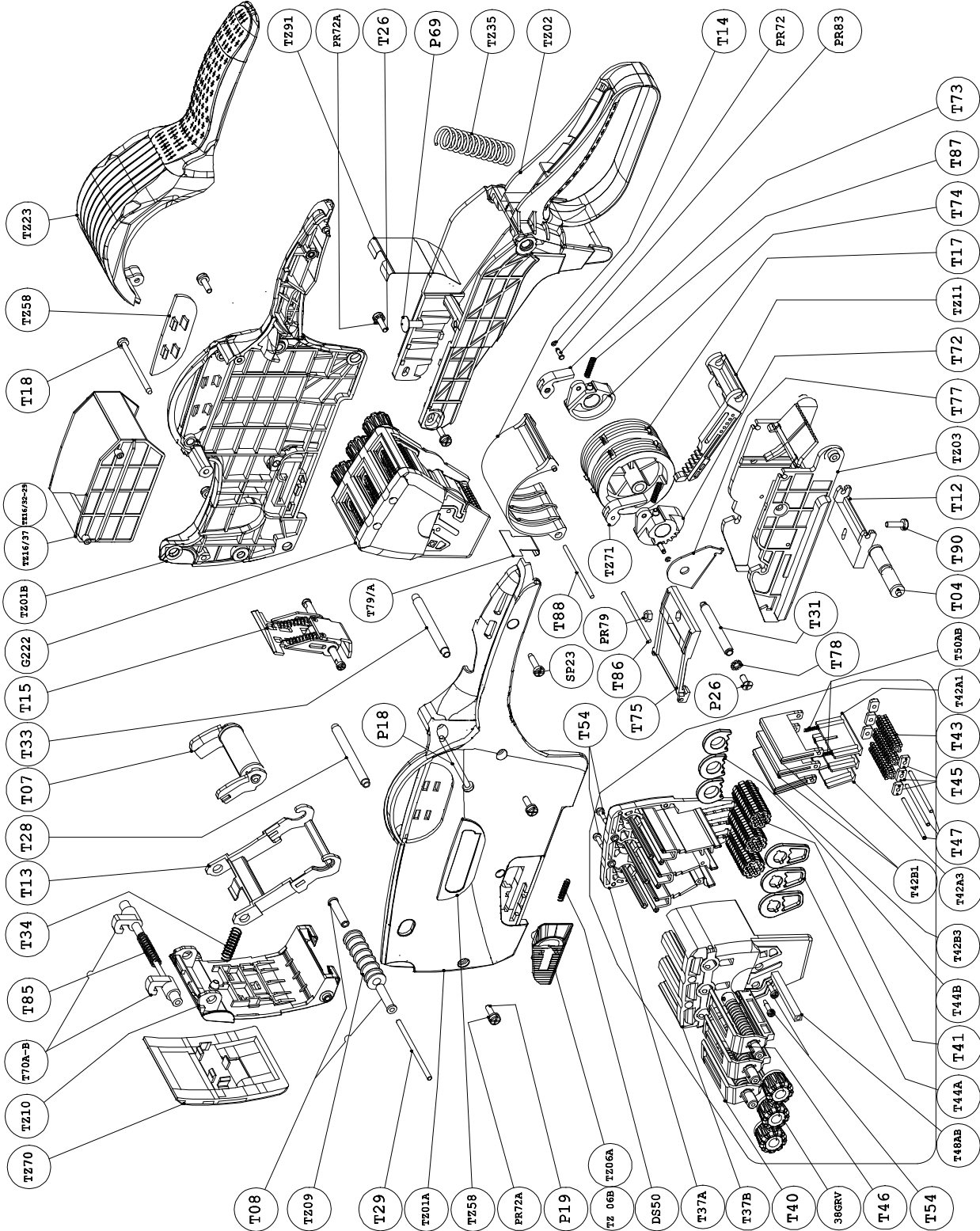


4) Print location adjustment

We don't advise untrained staff to perform the following steps.

By unloosen the screw on the print head as indicated one can adjust the guide plate for the label roll to raise or lower the print. Move the guide plate as needed and tighten the screw again.

5) Exploded view and part numbers



Sterintech 2 line label gun 3719 (14+14)																
Pos.	1	2	3	4	5	6	7	8	9	10	11	12	13	14	First line	
1	A	A	A	1	1	1	1	1	1	1	1	1	1	1	Qty of digits:	3 x ABC..Z and 11 x numbers
2				2	2	2	2	2	2	2	2	2	2	2	Fontsize	14 x 3,0 mm
3				3	3	3	3	3	3	3	3	3	3	3	Fontwidth	1,56 mm
4				4	4	4	4	4	4	4	4	4	4	4		
5				5	5	5	5	5	5	5	5	5	5	5		
6				6	6	6	6	6	6	6	6	6	6	6		
7				7	7	7	7	7	7	7	7	7	7	7		
8				8	8	8	8	8	8	8	8	8	8	8		
9				9	9	9	9	9	9	9	9	9	9	9		
10				0	0	0	0	0	0	0	0	0	0	0		
11				-	-	-	-	-	-	-	-	-	-	-		
12				/	/	/	/	/	/	/	/	/	/	/		
13	Z	Z	Z		
14	BLANK															
Pos.	1	2	3	4	5	6	7	8	9	10	11	12	13	14	Second Line	
1	1	1.	1	1.	1	1	1	1	1.	1	1.	1	1	1	Qty of digits:	14 x numbers
2	2	2.	2	2.	2	2	2	2	2.	2	2.	2	2	2	Fontsize	7 x 3,0 mm and 7 x 4,5 mm
3	3	3.	3	3.	3	3	3	3	3.	3	3.	3	3	3	Fontwidth	1,56 mm
4	4	4.	4	4.	4	4	4	4	4.	4	4.	4	4	4		
5	5	5.	5	5.	5	5	5	5	5.	5	5.	5	5	5		
6	6	6.	6	6.	6	6	6	6	6.	6	6.	6	6	6		
7	7	7.	7	7.	7	7	7	7	7.	7	7.	7	7	7		
8	8	8.	8	8.	8	8	8	8	8.	8	8.	8	8	8		
9	9	9.	9	9.	9	9	9	9	9.	9	9.	9	9	9		
10	0	0.	0	0.	0	0	0	0	0.	0	0.	0	0	0		
11	-	-.	-	-.	-	-	-	-	-.	-	-.	-	-	-		
12	/	/.	/	/.	/	/	/	/	/.	/	/.	/	/	/		
13		
14	BLANK															